

www.yalelock.pl

An ASSA ABLOY Group brand

ASSA ABLOY

Technologia klucza i zamka nie zmienia się od stuleci.



STYLE & SECURITY - "A" COLLECTION

TECHNOLOGICAL EVOLUTION
OF KEY OPERATED LOCKS

Locks of Ancient Civilizations

Archaeological evidence indicates that key-operated locks were used in Egypt as early as 2,000 B.C. The Greeks used a somewhat similar arrangement of key and latch strings, but their lock, unlike the Egyptian-type, could be operated from either side of the door.

Yale Lock Collection - Case 1A

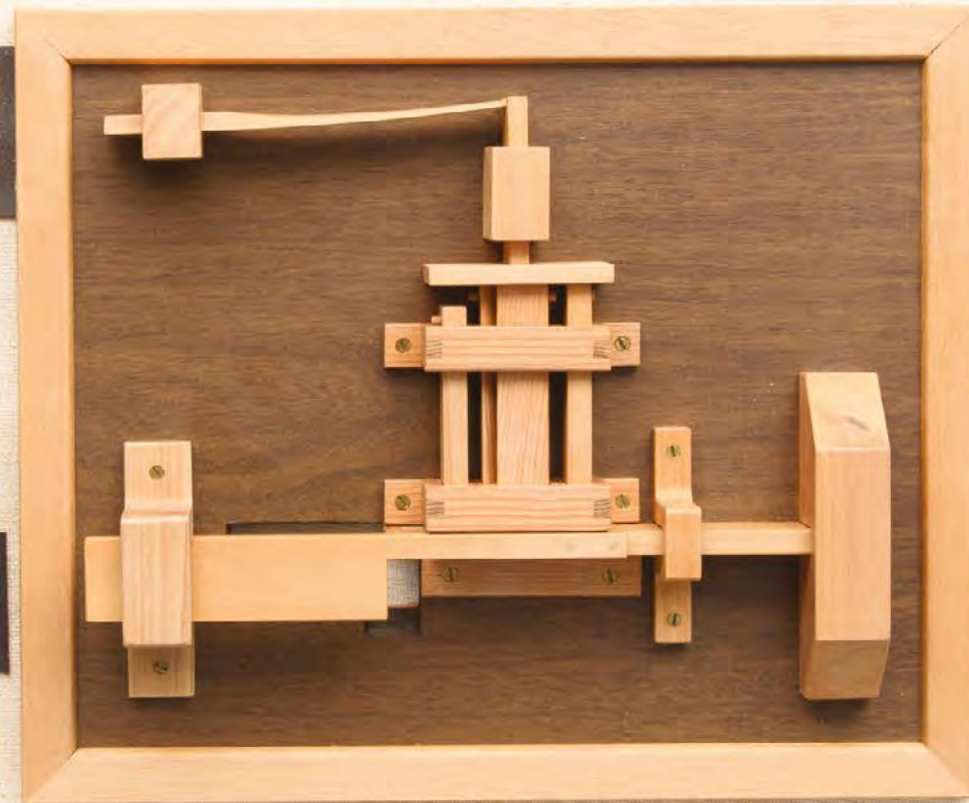
1. Model of a Greek lock. Opened from the outside by inserting the large key through the hole and pushing back the bolt on the inside. Door was locked by pulling the bolt shut from the outside with a latch string which was then removed.

4. 16th Century Chinese padlock with spring mechanism. Expansion spring bars movement of the shackle until the spring is compressed by the key. Keyhole is hidden by two sliding doors. (Emery - O. M. L.)

Catalog #1792.



7. Cutaway model of modern Yale pin tumbler cylinder lock. This type of lock, still the most secure key-operated locking device, was invented by Linus Yale, Jr., in 1865, and is based upon a principle similar to that of the ancient Egyptian lock.



3. Roman lock replica of the type used about 200 B.C. Geometric design of the key corresponds with the shape of the tumblers.

6. 17th Century Central European padlock with spring mechanism. Catalog #1193.



5. Egyptian-type lock. Wooden pins fall by gravity into corresponding holes in the bolt. The key lifts these pins flush with the bolt so that it can be retracted. This type of lock dates back to at least 2,000 B.C., and is still in use today in some primitive cultures. The example exhibited here was found in the 18th Century in Skiroe, Amaland, Sweden, and probably dates back to the 12th or 13th Century.

Catalog #1813



2. Replica of a Greek temple key. The original (Circa. 700 B.C.) was excavated at the Temple of Artemis at Lusoi, Arcadia in Greece.

8. Modern Yale padlock with pin tumbler cylinder mechanism.



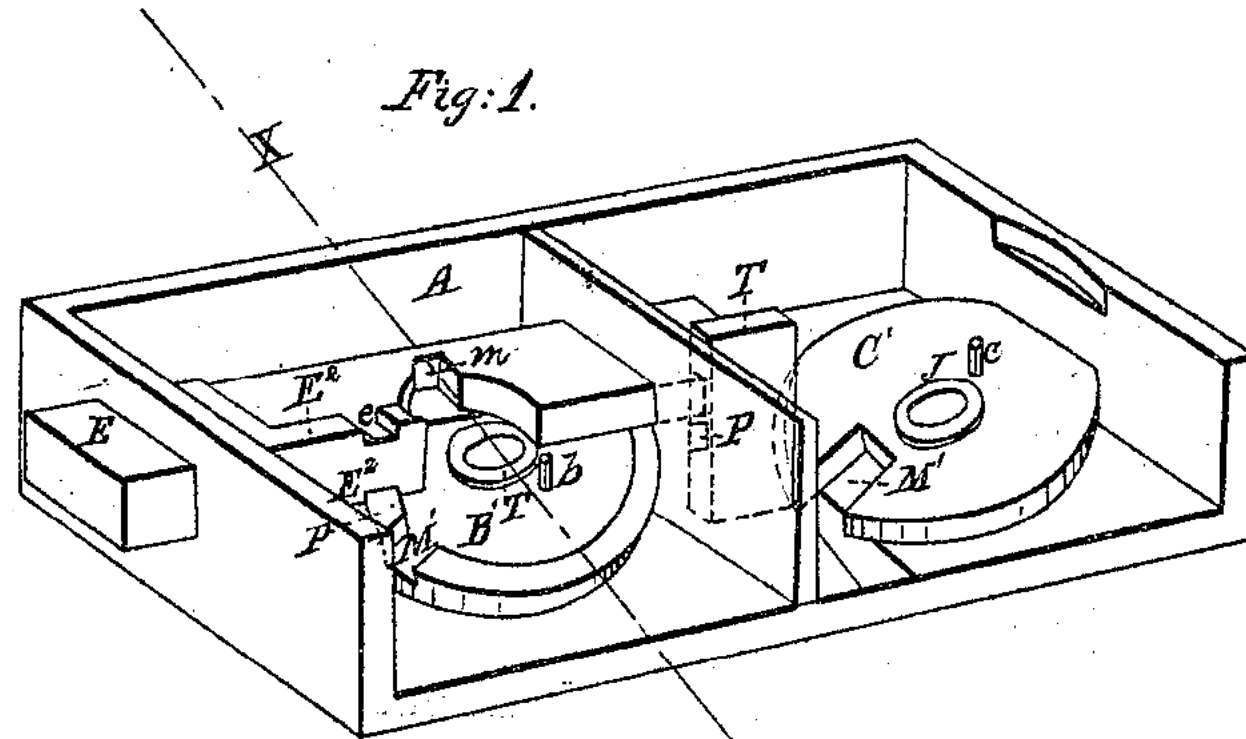
W 1843 roku wszystko
zmieniło dzięki
opatentowanemu zamkowi
szyfrowemu.

Linus Yale

Born: 27 April 1797
Middletown, Connecticut, United States



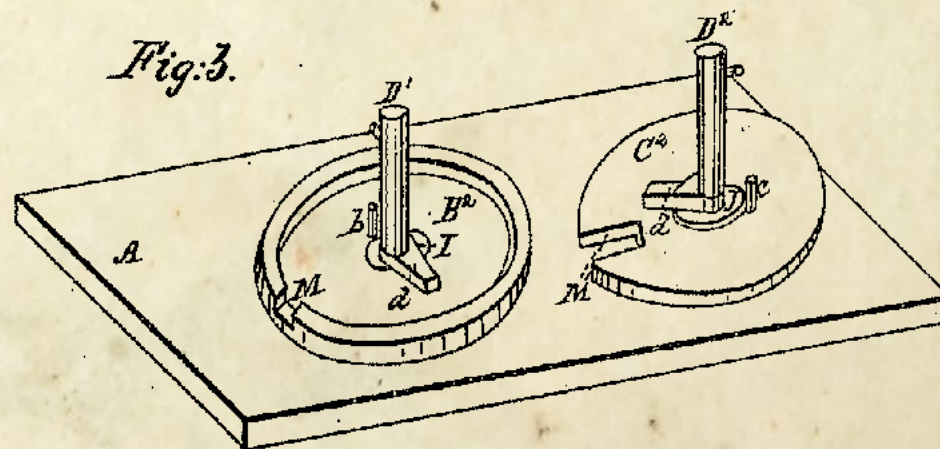
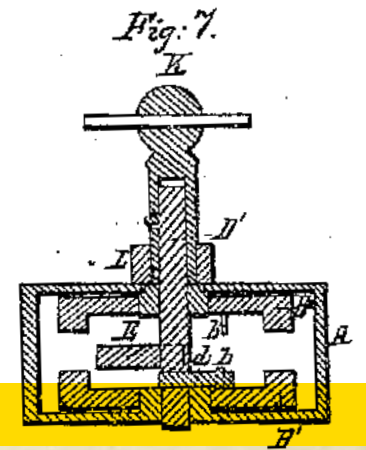
Died: 8 August 1858
Newport, New York, United States



LINUS YALE AND CHS. WILSON,
OF SPRINGFIELD, MASSACHUSETTS.

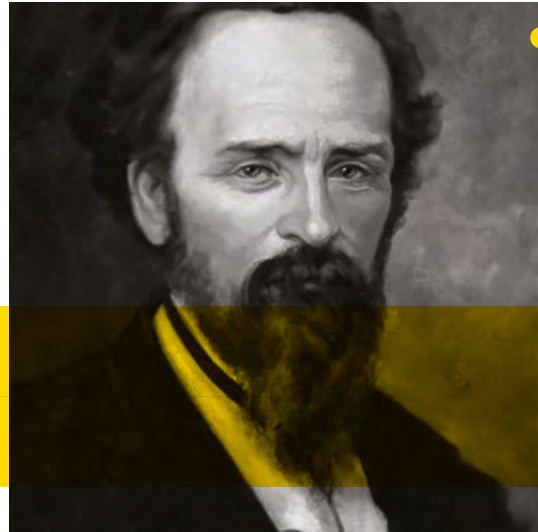
COMBINATION SAFETY-LOCK
FOR DOORS, 86C.

Specification of Letters
Patent No. 3,312
Dated: October 20, 1843



First Yale Factory
New York, United States

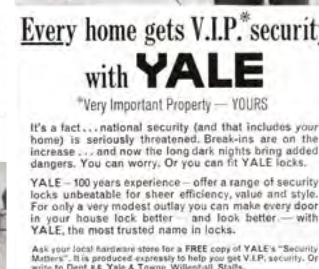
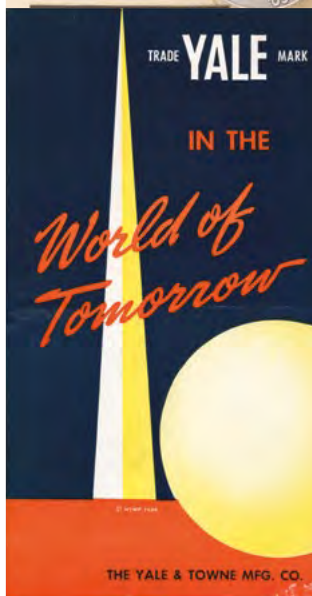
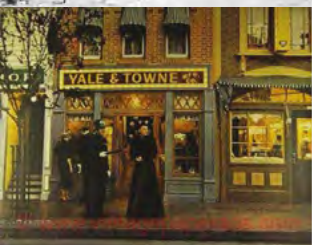
BORN: April 4, 1821
Salisbury, New York, United States



Syn Linusa Yale,
Linus Yale Jr. dołączył
do firmy w 1850 roku
i zmienił branżę
na zawsze dzięki zamkowi
bębenkowemu Yale.

DIED: December 25, 1868 (aged 47)
New York City, New York, United States





...mieliśmy wciąż
świadomość, co
znaczy nasza
marka.

DESIGN
noun

noun: design; plural noun: designs;
the arrangement of the features of an artefact,
as produced from following a plan or drawing.

SAFETY

noun
noun: safety
the condition of being protected from or unlikely
to cause danger, risk, or injury.

BE SURE IT'S MARKED

YALE

SECURITY
noun

noun: security; plural noun: securities
the state of being free from danger or threat.

RELIABILITY

noun
noun: reliability
the quality of being trustworthy or of
performing consistently well.

Look for the dealer who has
this sign in his window when
you want Yale Builders'
Hardware.





Obecni w

krajach i otwieramy nowe rynki

**Nasze produkty są pionierskie
dla nowej technologii
bezpieczeństwa.**



Zintegrowane



Inteligentne



Wygodne

Są wciąż
inteligentniejsze...



i
wygodniejsze.

Zaprojektowany dla współczesnego, połączonego świata

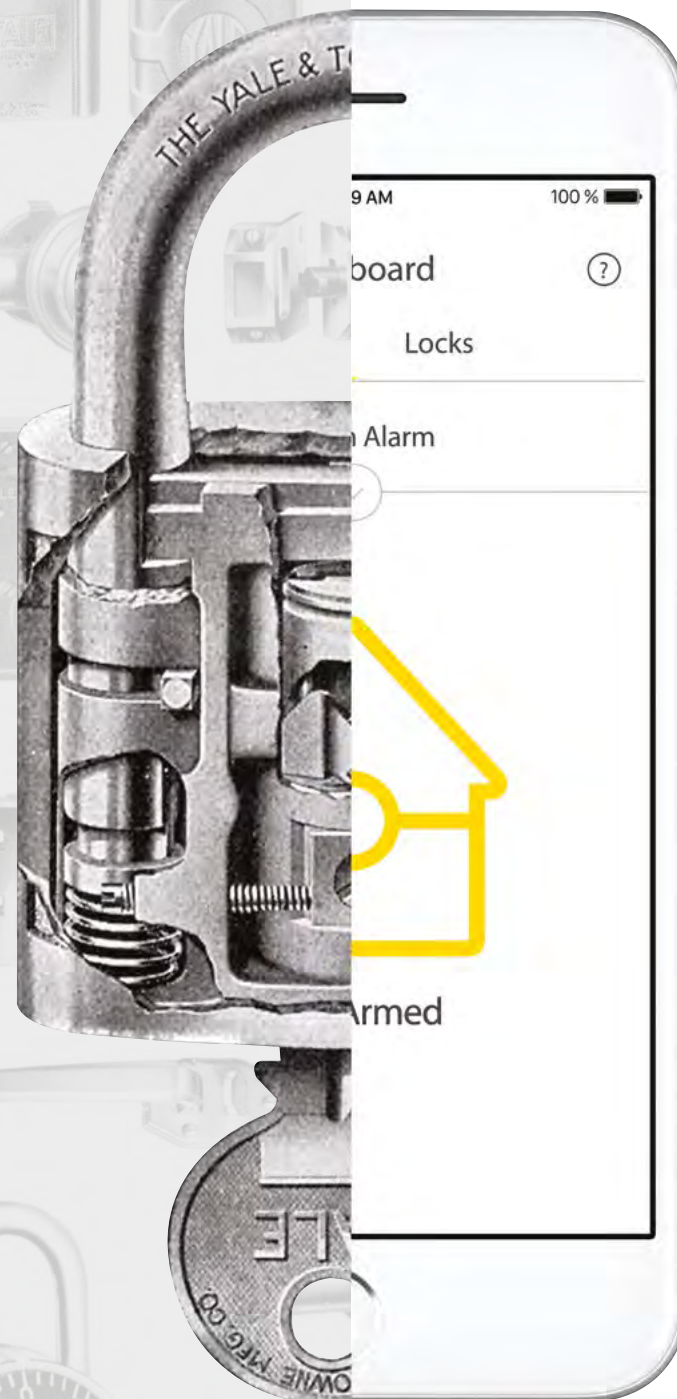





**Yale nadal istnieje,
aby chronić rzeczy,
które są
najważniejsze.**



**Zainspirowani naszą
przeszłością,**



**kreujemy przyszłość
domowych
zabezpieczeń.**



**Razem z Wami
czekamy na
kolejne 175 lat.**



175 YEARS IN THE MAKING

www.yalelock.com/heritage

An ASSA ABLOY Group brand

ASSA ABLOY